

Wingly Fly-In Procedures

We are looking forward to welcoming Wingly members to Blackbushe, AOPA Best Aerodrome 2019!

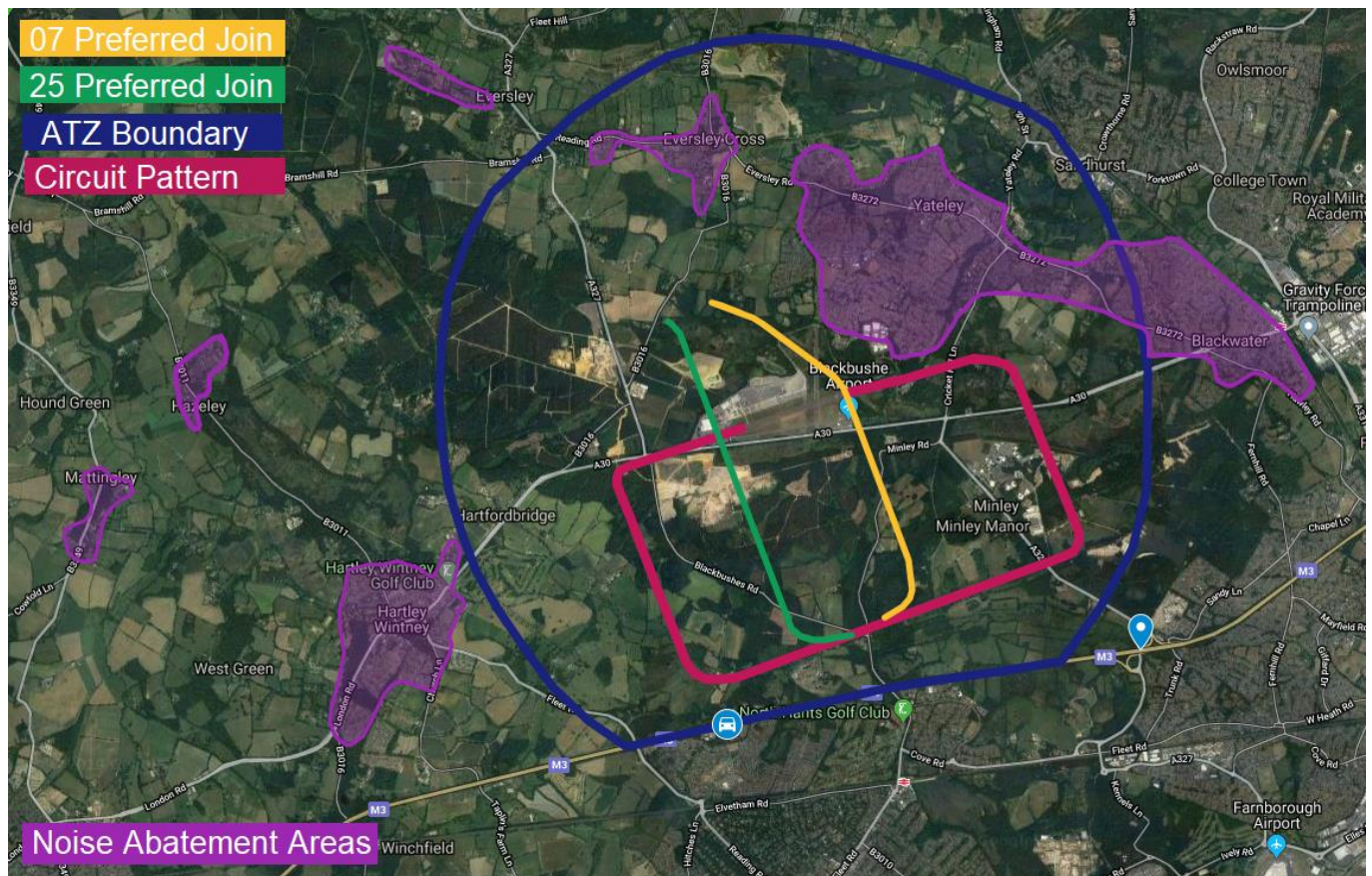
All visitors must PPR by using the webform: www.blackbusheairport.co.uk/ppr

NOISE

Please pay close attention to our Noise Abatement areas (in purple below). Overflight of these areas at any altitude is not permitted except in the interests of safety.

If arriving from the North or North East, please ensure you do not fly straight in, but head west past Wokingham
 Only turn South towards Blackbushe, once you have satisfied yourself you are clear of the noise abatement areas of Eversley and Yateley.

If using Runway 07, please stay west of the disused runway 14/32 to avoid Yateley (follow yellow line).



RULES & PROCEDURES

Please familiarise yourself with the Aerodrome Rules & Procedures: <https://www.blackbusheairport.co.uk/aerodrome>

We have some basic weather information and a webcam here: <https://www.blackbusheairport.co.uk/weather>

On the ground, you may be asked to switch to a ground frequency to be advised on the day. We are an AFIS station, and so any instructions issued by FISOs must be complied with. Do not commence taxi until approved by the FISO.

Hi-Viz is mandatory, please ensure at least one of each party wears one until in the event area.

Blackbushe Airport Limited
 Terminal Building, Blackbushe Airport
 Camberley, Surrey GU17 9LQ

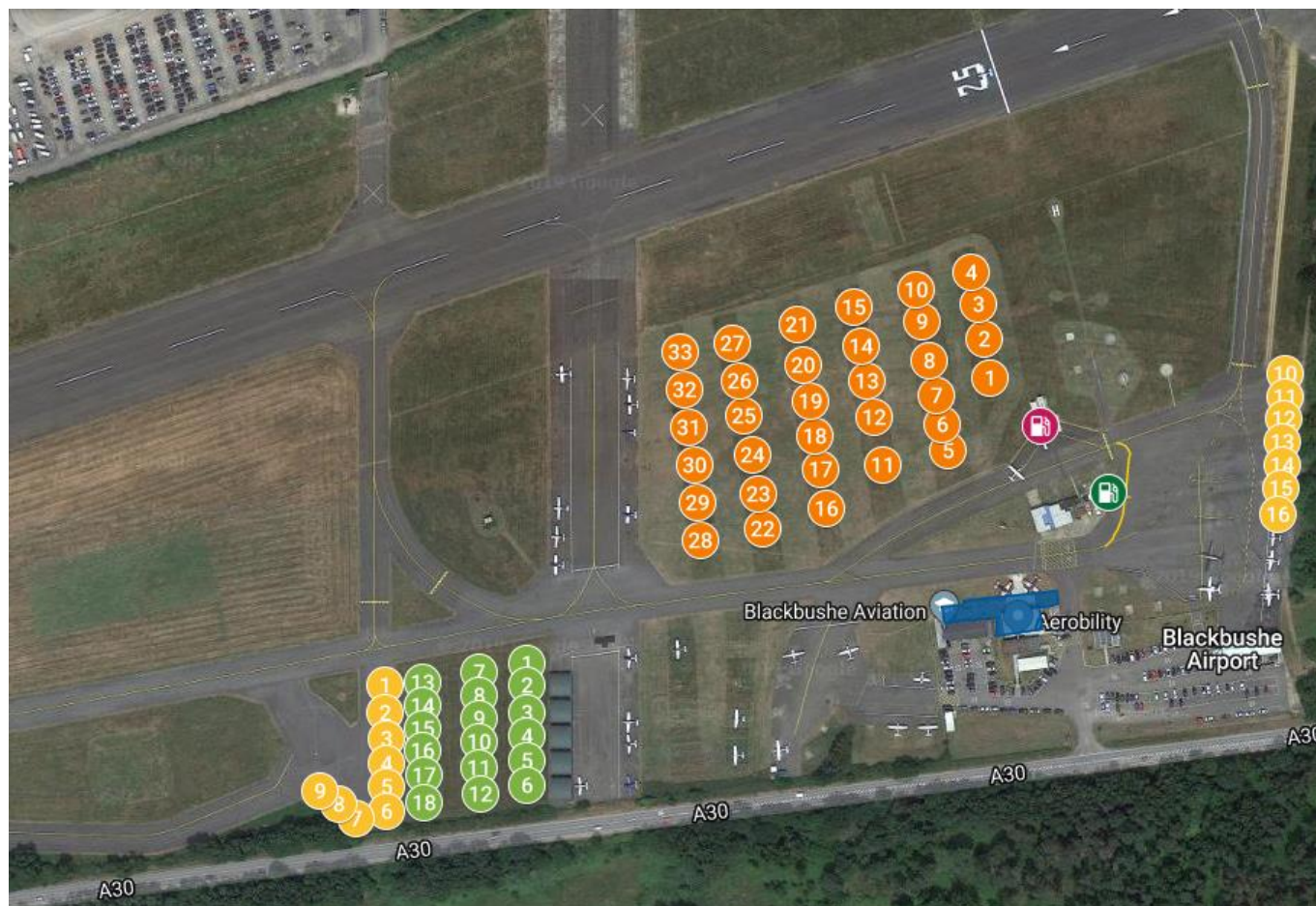
T: +44 1252 471 300
 E: admin@blackbusheairport.co.uk
 W: www.blackbusheairport.co.uk

Registered in England & Wales: 01642908
 VAT Number: GB 225 440 435

PARKING

The majority of available parking is on the grass. Staff will be on hand to marshal and direct aircraft. Aircraft will be parked in the order they arrive to minimise aircraft traffic on the ground.

If you require hard standing, we have limited spaces available, please let the FISO know.



REFUELLING

Due to the layout of the aerodrome, refuelling is advised before departure, not on arrival. This will allow efficient use of the taxiways. If you do require fuel on arrival, please let the FISO know immediately after landing.

We have 100LL, UL91 and JET-A1 at competitive prices. All fuelling is done by the airport fire crew. See <https://www.blackbusheairport.co.uk/charges> for our current prices.

EVENT AREA

The Event Area is in Aerobility's hangar and the Café patio. The area will be marked out with temporary fencing. Please remain within the area unless accessing aircraft, when Hi-Viz should be worn.

DEPARTURE

Before taxi, seek permission from the FISO. On departure, please ensure to pay attention to noise abatement areas. If departing on Runway 07, there is no left turn, instead, follow the circuit and climb into the overhead on the downwind leg.

Thank you in advance for your cooperation!